



# Service

**B  
u  
l  
l  
e  
t  
i  
n**

## WARNING

### NISSAN-INFINITI-SUBARU GALLEY FEED INJECTORS

**Avoid Part Failure / Voided Warranty**

<b>Nissan Python Part #</b>		<b>Infiniti Python Part #</b>		<b>New Python Part #</b>	
630-113	630-251	623-053	623-267	623-053N	630-121N
630-119	630-254	623-054	623-268	623-054N	630-251N
630-121	630-255	623-055	623-269	623-055N	638-161N
630-123	630-256			630-119N	
630-123A	630-257	<b>Subaru Python Part #</b>			
		638-161			

These installation instructions must be followed or severe engine flooding could occur causing hydrostatic lock-up of engines.

For trouble free operation the fuel rail should be removed from the vehicle and drained of all its fuel prior to installation of this injector. Clean the area around the top of the injector mount to prevent contamination of the injector fuel bowl when the injector is removed from the rail. The fuel bowls of each injector should be completely dry and free from any contaminants.

After injector removal, inspect the rubber hold down washer on top of the injector below the aluminum bracket. If it is dry or brittle, replace it.

Lubricate the upper and lower o-ring of the injector with white lithium grease prior to installation. Place the injector into the fuel bowl, place the rubber hold down washer and bracket over the top of the injector.

**TIGHTEN BY HAND** the two hold down screws evenly alternating screws until hand tight. Torque screws to manufacturers specifications.

Reinstall the fuel rail onto the vehicles fuel lines. Pressurize the system and check for fuel leakage from the lower o-ring. If no leaks are present, complete the installation of the fuel rail onto the manifold.

**Python Injection, Inc. will not warranty injectors with torn upper or lower o-rings**

## SEE REVERSE SIDE FOR STEP BY STEP INSTRUCTIONS

If you need technical assistance,  
you may call our Tech Line at  
(800) 959-2865

**TECH LINE (800)959-2865**

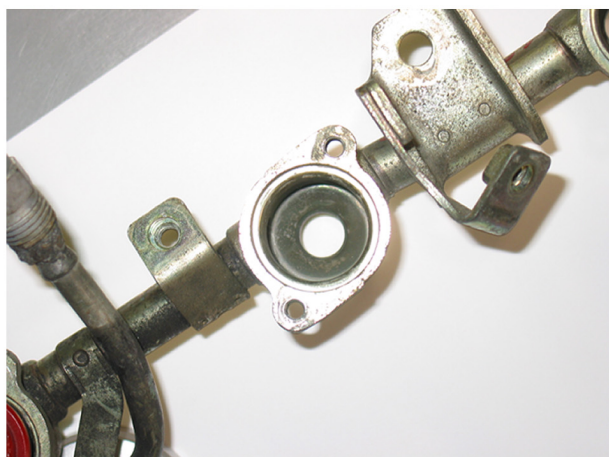
USA and Canada



**(1 of 2)**

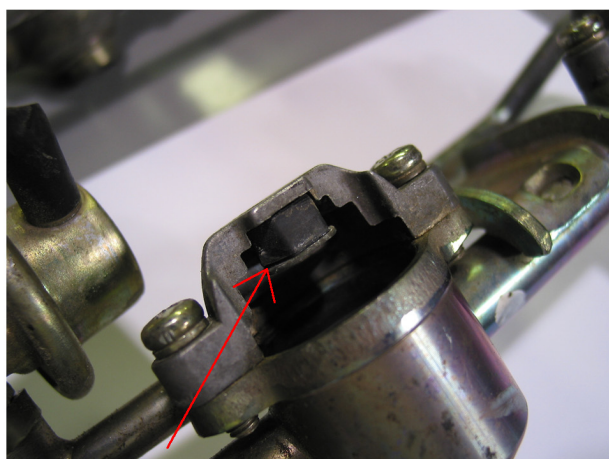
# Step By Step...

## **STEP 1**



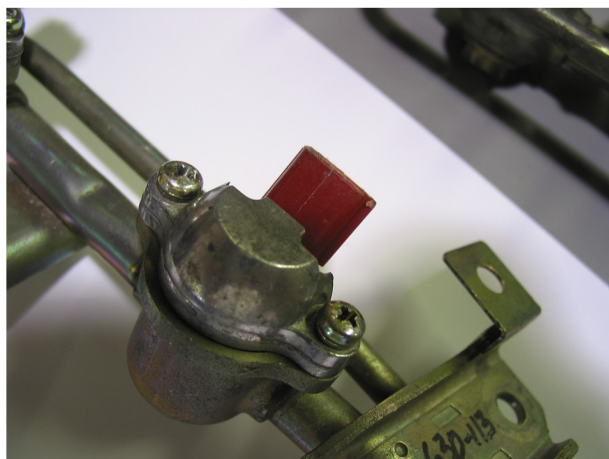
Clean area around the top of the fuel bowl to prevent contamination of injector. This is vital for smooth and proper installation of injectors.

## **STEP 2**



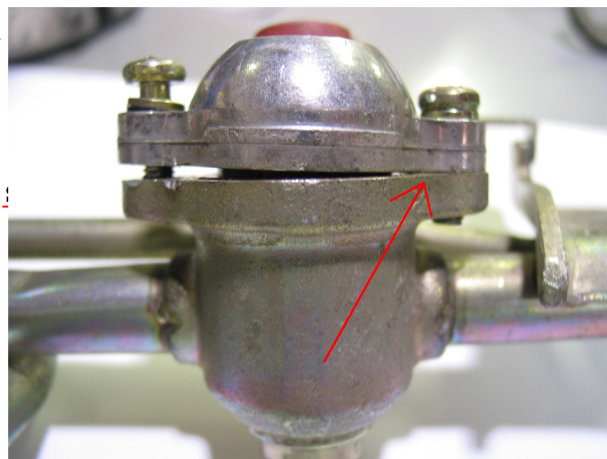
Check rubber boot.  
Replace if it is dry or brittle.

## **STEP 3**



Tighten by hand the two hold down screws evenly, alternating screws until hand tight. Torque screws to manufacturers specification.

## **STEP 3**



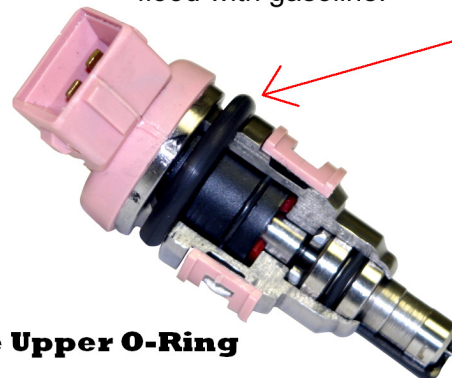
This is an improper installation. Never screw down one side at a time.

## **STEP 4**



**Note Lower O-Ring**

Improper installation damages the lower o-ring and will cause the injector seal to leak, causing the engine cylinder to flood with gasoline.



**Note Upper O-Ring**